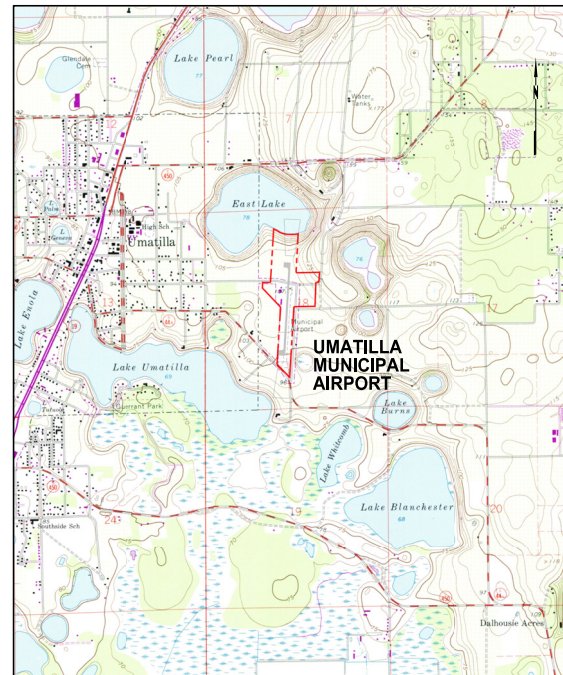


# AIRPORT MASTER PLAN

## UMATILLA MUNICIPAL AIRPORT

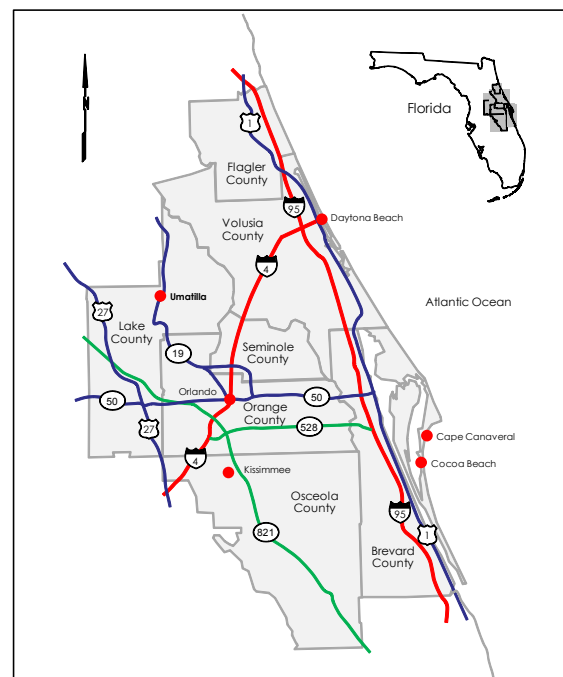


CITY OF UMATILLA  
LAKE COUNTY, FLORIDA



**LOCATION MAP**

NOT TO SCALE



**VICINITY MAP**

NOT TO SCALE

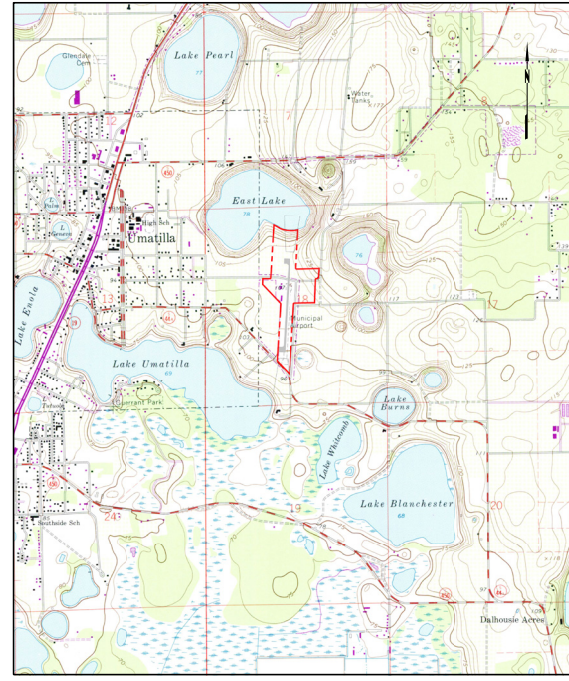
<u>SHEET NO.</u>	<u>TITLE</u>
1.	TITLE SHEET
2.	EXISTING AIRPORT LAYOUT
3.	AIRPORT LAYOUT PLAN
4.	TERMINAL AREA PLAN
5.	AIRSPACE PLAN AND OBSTRUCTION DATA
6.	RUNWAY 18-36 INNER APPROACH PLAN AND PROFILE
7.	LAND USE AND GROUND ACCESS PLAN
8.	AIRPORT PROPERTY MAP

OCTOBER 2010

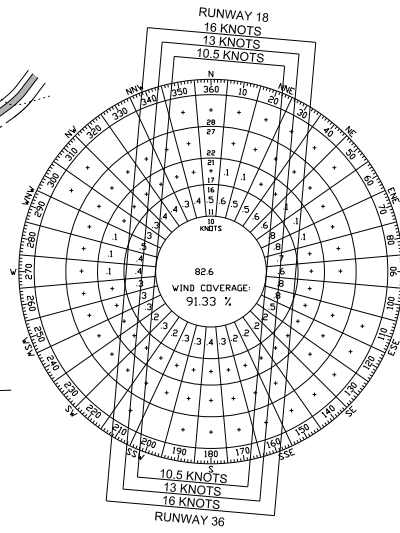
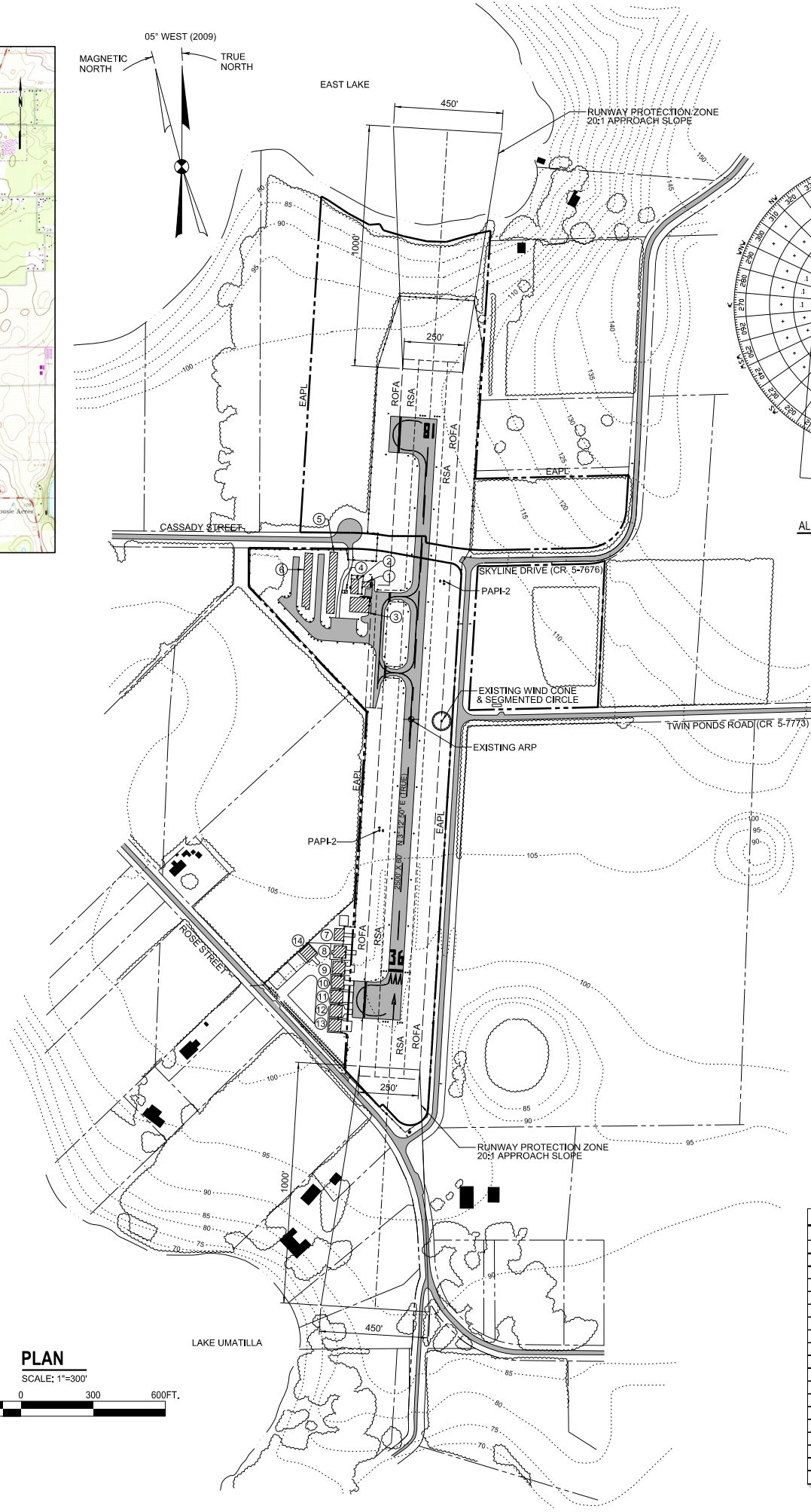
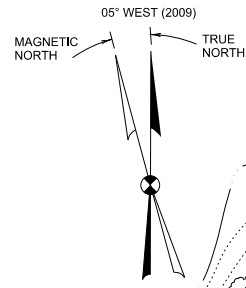
**C&S**  
COMPANIES®

C&S Engineers, Inc.  
605 E. Robinson Street  
Suite 210  
Orlando, FL 32801  
Phone: 407-422-1118  
Fax: 407-841-9149  
www.cscos.com

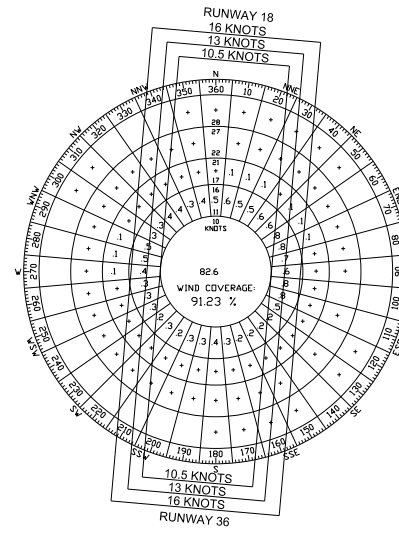
FAA AIP NO. 3-12-0026-005-2009  
FDOT FM NO. 426912-1-94-01



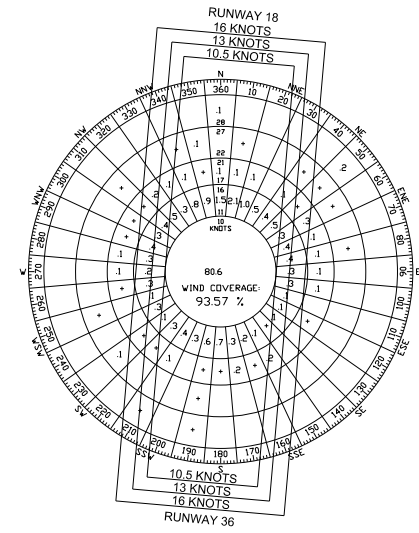
LOCATION MAP  
NOT TO SCALE



ALL WEATHER WIND ROSE



VFR WIND ROSE



IFR WIND ROSE

RUNWAY	PERCENT WIND COVERAGE								
	12 MPH (10.5 Knot)			15 MPH (13 Knot)			18 MPH (16 Knot)		
	ALL WEATHER	VFR	IFR	ALL WEATHER	VFR	IFR	ALL WEATHER	VFR	IFR
18	70.95%	71.11%	64.38%	73.59%	73.79%	65.76%	76.45%	76.72%	67.11%
36	78.31%	78.24%	78.61%	81.60%	81.58%	80.64%	84.80%	84.84%	82.53%
18-36	91.33%	91.23%	93.57%	95.30%	95.27%	96.04%	99.00%	99.03%	98.16%

SOURCE: NATIONAL OCEANIC & ATMOSPHERIC ADMINISTRATION,  
NATIONAL CLIMATIC DATA CENTER,  
ASHEVILLE, NORTH CAROLINA

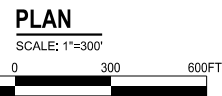
OBSERVATIONS TAKEN AT ORLANDO INTERNATIONAL AIRPORT  
FOR THE PERIOD BETWEEN 1999 - 2008

FACILITIES TABLE		
Existing		
#	Facility Name	Top Elevation
1	GA Terminal Building	116.5'
2	Apartment Building/Storage	128.5'
3	Communal/Maintenance Hangar	128.5'
4	Electrical Vault	115'
5	T-Hangar Building A	122'
6	T-Hangar Building B	121'
7	Corporate Hangar	121.5'
8	Corporate Hangar	124.5'
9	Corporate Hangar	120.5'
10	Corporate Hangar	117'
11	Corporate Hangar	116.5'
12	Corporate Hangar	116.5'
13	Corporate Hangar	116'
14	Corporate Hangar	118'

LEGEND	
Existing	Description
---	Runway Centerline
---	Runway Safety Area (RSA)
---	Runway Object Free Area (ROFA)
---	Runway Obstacle Free Zone (ROFZ)
---	Runway Protection Zone (RPZ)
---	Taxiway Object Free Area (TOFA)
---	Taxiway Safety Area
---	Building Restriction Line (BRL)
---	Pavement
+	Airport Reference Point
+	Airport Buildings
+	Other Buildings
---	Airport Property Line
---	Other Property Lines
---	Railroad
---	Fence
---	Tree Line
---	Wetlands
---	Ground Elevation Contours

AIRPORT DATA TABLE	
Airport Data	Existing
Airport Elevation (MSL)	106.6'
Airport Reference Point (NAD 83)	
Latitude	28° 55' 27" N
Longitude	81° 39' 07" W
Mean Max. Temperature of Hottest Month	91° F
Airport Terminal Area NAVAIDS	wind cone, segmented circle, rotating beacon
Magnetic Variation	05° W
Date of Magnetic Variation	2009
NPIAS Service Level	GA
State Service Level	community airport
Wind Coverage Crosswind Component (12 MPH)	
VFR	91.23%
IFR	93.57%
All Weather	91.33%
Airport Reference Code	A-I
Design Aircraft	Piper Seneca
Taxiway Lighting	MILT
Taxiway Marking	STD

RUNWAY DATA TABLE	
Runway Data	Runway 18/36 Existing
Effective Gradient (%)	0.2
Maximum Grade Change	5.7
Wind Coverage (%)	91.81%
Max. Elevation (MSL)	106.6'
Runway Length	2500'
Runway Width	60'
Displaced Threshold	- / 200'
Usable Runway Length	2500'
Surface Type	asphalt
Pavement Strength	
Single Wheel	12,500
Dual Wheel	
Dual Tandem	
Approach Surface Slope	20:1 / 20:1
Approach Minimums	
Visual Approach Aids	PAPI-2 and threshold/runway end lights / PAPI-2 and threshold/runway end lights
Instrument Approach Aids	GPS / GPS
Runway Lighting	MIRL
Runway Marking	BSC
Airport Reference Code (ARC)	A-I
Critical Aircraft	Piper Seneca
Stage Length	500 miles
Runway Object Free Area (ROFA)	
Length Beyond Runway	240'
Width	250'
Runway Safety Area (RSA)	
Length Beyond Runway	240'
Width	120'
Obstacle Free Zone (OFZ)	250'
FAR Part 77 Category	Visual / Visual
Runway End Coordinates (NAD 83)	
Latitude	18: 28° 55' 39.55" N
Longitude	18: 81° 39' 06.74" W
Latitude	36: 28° 55' 14.84" N
Longitude	36: 81° 39' 07.31" W
Runway End Elevations (MSL)	106.6' / 100.9'
Displaced Threshold Elevation (MSL)	- / 100.8'
TDZ Elevation (MSL)	106.6' / 106.6'
Line of Sight Violations	n/a



F:\Project\30 - City of Umatilla\30001001 Airport Master Plan\CADD\Sheet Files\Umatilla EAL.dgn  
10/4/2011 10:45:38 AM

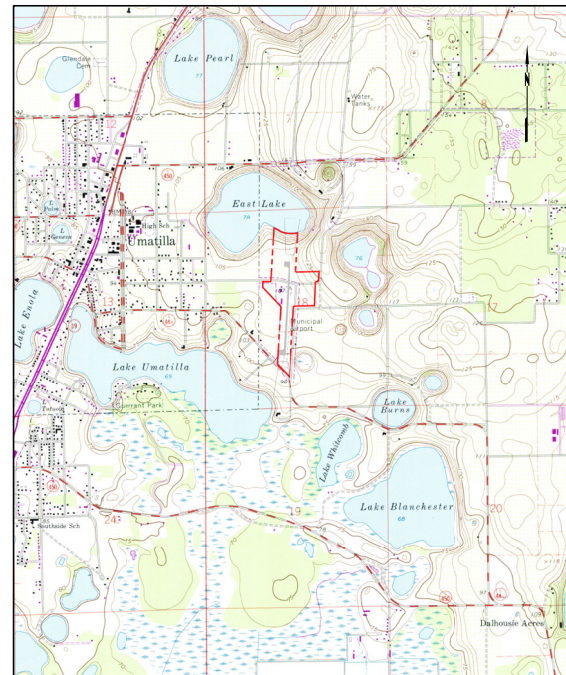


PROJECT NO:	DESIGNED BY:	DATE:	PROJECT MGR:	DATE:
100.001.001	JCT	OCTOBER 2010	KCK	
AS SHOWN	DRAWN BY:		JCT	
UMATILLA EAL.DGN	CHECKED BY:		KCK	

NO ALTERATION PERMITTED HEREON EXCEPT AS PROVIDED UNDER SECTION 7209 SUBDIVISION 2 OF THE NEW YORK STATE EDUCATION LAW

UMATILLA MUNICIPAL AIRPORT  
CITY OF UMATILLA  
LAKE COUNTY, FLORIDA

AIRPORT LAYOUT PLAN UPDATE  
EXISTING AIRPORT LAYOUT



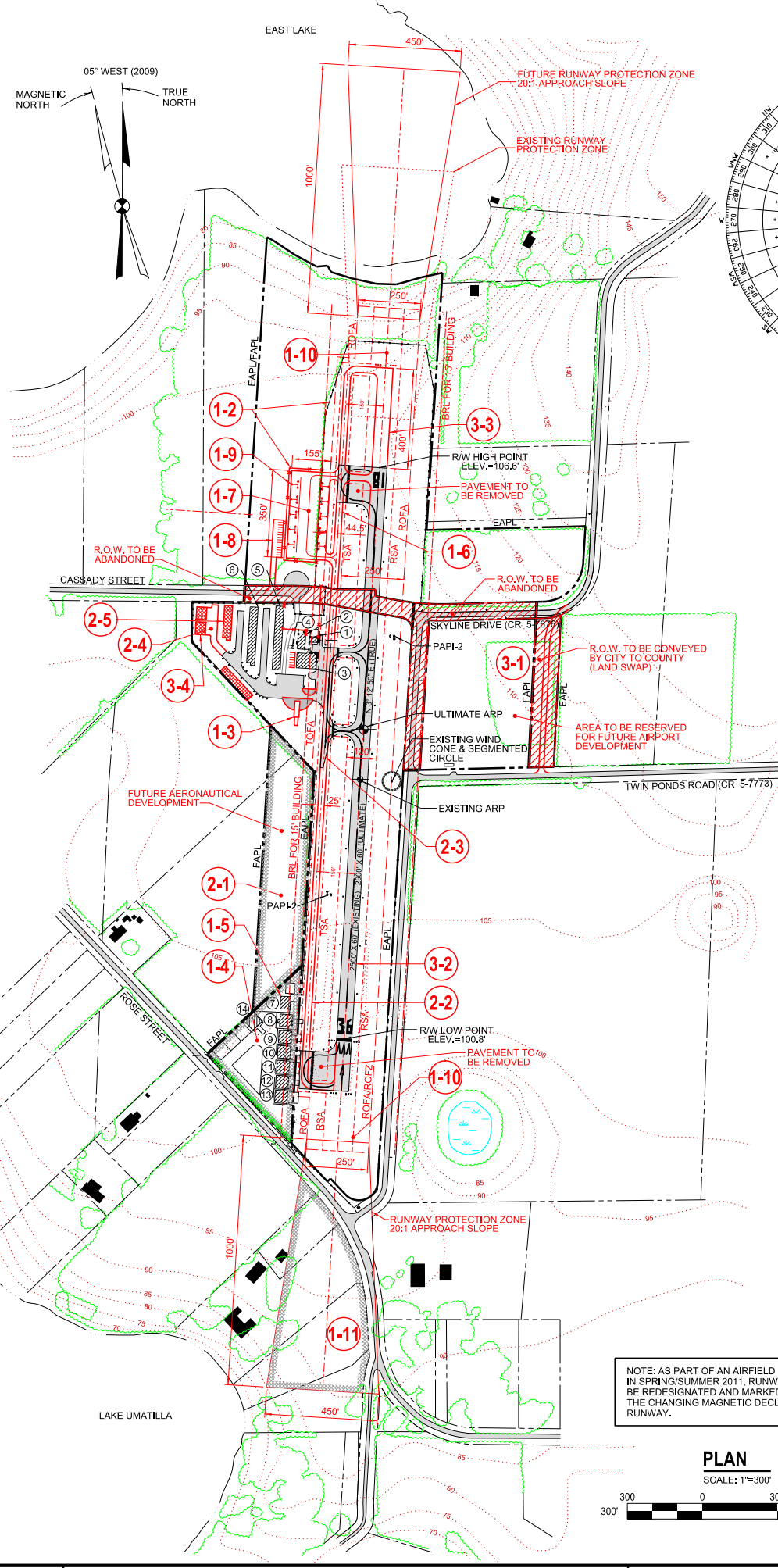
LOCATION MAP  
NOT TO SCALE

LEGEND		
Existing	Description	Proposed
---	Runway Centerline	---
---	Runway Safety Area (RSA)	---
---	Runway Object Free Area (ROFA)	---
---	Runway Obstacle Free Zone (ROFZ)	---
---	Runway Protection Zone (RPZ)	---
---	Taxiway Object Free Area (TOFA)	---
---	Taxiway Safety Area	---
---	Building Restriction Line (BRL)	---
---	Pavement	---
+	ARP	+
■	Airport Buildings	■
■	Other Buildings	■
---	Airport Property Line	---
---	Other Property Lines	---
---	Railroad	---
---	Fence	---
---	Tree Line	---
---	Wetlands	---
---	Ground Elevation Contours	---
---	Proposed Land Acquisition	---

FAA's approval of this Airport Layout Plan (ALP) represents acceptance of the general location of future facilities depicted. During the preliminary design phase, the airport owner is required to resubmit for approval the final locations, heights and exterior finish of structures. FAA's concern is obstructions, impact on electronic aids or adverse effects on controller view of aircraft approach and ground movement areas which could adversely affect the safety, efficiency or utility of the airport.

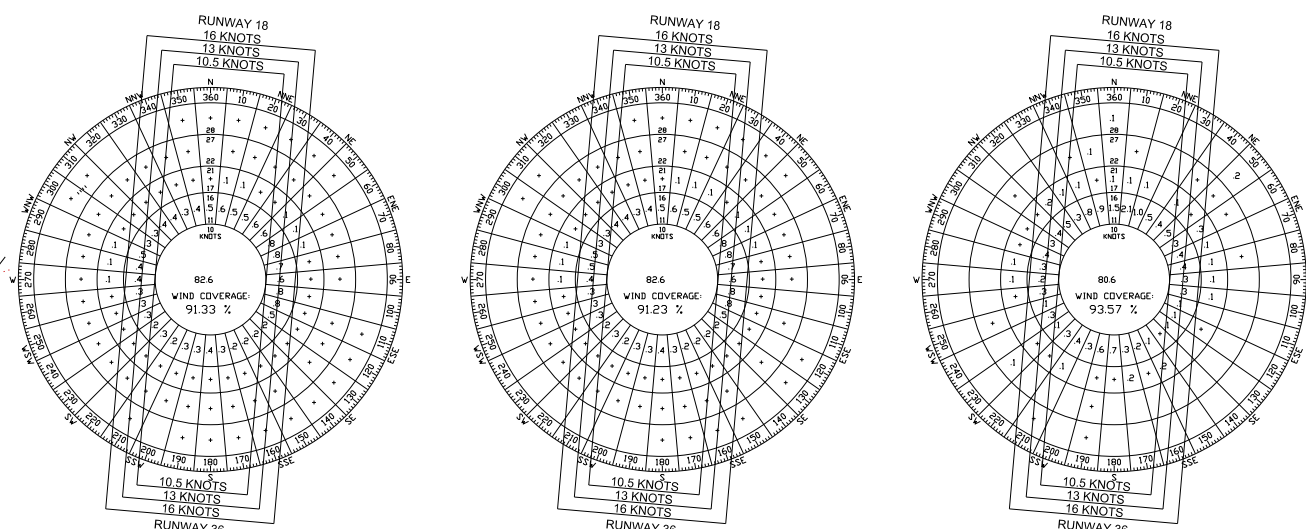
DEVELOPMENT PROJECT PHASING

- Phase 1 (2010-2014)**
- 1-1 Environmental Assessment (NEPA EA) for 1-5 Year Development
  - 1-2 Fencing & Security Enhancements
  - 1-3 Aviation Fuel Farm
  - 1-4 Land Acquisition - Corporate Hangar Area
  - 1-5 Building Acquisition - Corporate Hangar Area
  - 1-6 Parallel Taxiway (Phase 1 - North)
  - 1-7 Transient Aircraft Parking Apron (6,000 SY)
  - 1-8 Automobile Access and Parking Area (900 SY)
  - 1-9 Aircraft Storage Hangars (Shade Structures)
  - 1-10 Develop GPS Approaches to Runways 18 and 36
  - 1-11 Land/Easement Acquisition for Runway 36 Approach & RPZ
- Phase 2 (2015-2019)**
- 2-1 Land Acquisition - Central Terminal Area (4 acres)
  - 2-2 Parallel Taxiway (Phase 2 - South)
  - 2-3 Rehabilitate Taxiway Pavement
  - 2-4 Terminal Area Apron Expansion
  - 2-5 T-Hangar Development
  - 2-6 Environmental Assessment (NEPA EA) for Runway Extension
- Phase 3 (2020-2029)**
- 3-1 Road Realignment - Skyline Drive
  - 3-2 Rehabilitate Runway Pavement
  - 3-3 Runway and Taxiway Extension
  - 3-4 Corporate Hangar Development



NOTE: AS PART OF AN AIRFIELD MARKING PROJECT IN SPRING/SUMMER 2011, RUNWAY 18/36 ENDS WILL BE REDESIGNATED AND MARKED 0119 TO REFLECT THE CHANGING MAGNETIC DECLINATION OF THE RUNWAY.

**PLAN**  
SCALE: 1"=300'



RUNWAY	PERCENT WIND COVERAGE					
	12 MPH (10.5 Knot)		15 MPH (13 Knot)		18 MPH (16 Knot)	
	ALL WEATHER	VFR	IFR	ALL WEATHER	VFR	IFR
18	70.95%	71.11%	64.38%	73.59%	73.79%	65.76%
36	78.31%	78.24%	78.61%	81.60%	81.58%	80.64%
18-36	91.33%	91.23%	93.57%	95.30%	95.27%	96.04%

SOURCE: NATIONAL OCEANIC & ATMOSPHERIC ADMINISTRATION, NATIONAL CLIMATIC DATA CENTER, ASHEVILLE, NORTH CAROLINA

OBSERVATIONS TAKEN AT ORLANDO INTERNATIONAL AIRPORT FOR THE PERIOD BETWEEN 1999 - 2008

CITY OF UMATILLA

APPROVED BY: \_\_\_\_\_  
DATE: \_\_\_\_\_

FLORIDA - DEPARTMENT OF TRANSPORTATION AVIATION OFFICE - DISTRICT 5 ORLANDO

APPROVED BY: \_\_\_\_\_  
DATE: \_\_\_\_\_

FEDERAL AVIATION ADMINISTRATION ORLANDO AIRPORTS DISTRICT OFFICE

APPROVED BY: \_\_\_\_\_  
DATE: \_\_\_\_\_

Submitted by: \_\_\_\_\_  
DATE: \_\_\_\_\_

FACILITIES TABLE				
#	Existing Facility Name	Top Elevation	Proposed Facility Name	Top Elevation
1	GA Terminal Building	116.5'	1 GA Terminal Building	116.5'
2	Apartment Building/Storage	128.5'	2 Apartment Building/Storage	128.5'
3	Communal/Maintenance Hangar	128.5'	3 Communal/Maintenance Hangar	128.5'
4	Electrical Vault	115'	4 Electrical Vault	115'
5	T-Hangar Building A	122'	5 T-Hangar Building A	122'
6	T-Hangar Building B	121'	6 T-Hangar Building B	121'
7	Corporate Hangar	121.5'	7 Corporate Hangar	121.5'
8	Corporate Hangar	124.5'	8 Corporate Hangar	124.5'
9	Corporate Hangar	120.5'	9 Corporate Hangar	120.5'
10	Corporate Hangar	117'	10 Corporate Hangar	117'
11	Corporate Hangar	116.5'	11 Corporate Hangar	116.5'
12	Corporate Hangar	116.5'	12 Corporate Hangar	116.5'
13	Corporate Hangar	116'	13 Corporate Hangar	116'
14	Corporate Hangar	118'	14 Corporate Hangar	118'
15	Shade Hangar	115'	15 Shade Hangar	115'
16	Shade Hangar	115'	16 Shade Hangar	115'
17	T-Hangar Building C	121'	17 T-Hangar Building C	121'
18	T-Hangar Building D	122'	18 T-Hangar Building D	122'
19	Corporate Hangar	121'	19 Corporate Hangar	121'
20	Corporate Hangar	121'	20 Corporate Hangar	121'

AIRPORT DATA TABLE		
Airport Data	Existing	Proposed
Airport Elevation (MSL)	106.6'	106.6'
Airport Reference Point (NAD 83)		
Latitude	28° 55' 27" N	28° 55' 29" N
Longitude	81° 39' 07" W	81° 39' 06" W
Mean Max Temperature of Hottest Month	91° F	91° F
wind cone, segmented circle, rotating beacon		wind cone, wind cone, segmented circle, rotating beacon
Magnetic Variation	05° W	05° W
Date of Magnetic Variation	2009	2009
NPIAS Service Level	GA	GA
State Service Level	community airport	community airport
Wind Coverage Crosswind Component (12 MPH)		
VFR	91.23%	91.23%
IFR	93.57%	93.57%
All Weather	91.33%	91.33%
Airport Reference Code	A-1	A-1/B-1
Design Aircraft	Piper Seneca	small aircraft excl.
Taxiway Lighting	MTL	MTL
Taxiway Marking	STD	STD

RUNWAY DATA TABLE		
Runway Data	Existing	Ultimate
Effective Gradient (%)	0.2	0.2
Maximum Grade Change	5.6'	5.6'
Wind Coverage (%)	91.81%	91.81%
Max. Elevation (MSL)	106.6'	106.6'
Runway Length	2500'	2900'
Runway Width	60'	60'
Displaced Threshold	- / 200'	- / 200'
Usable Runway Length	2500'	2900'
Surface Type	asphalt	asphalt
Pavement Strength		
Single Wheel	12,500	12,500
Dual Wheel		
Dual Tandem		
Approach Surface Slope	20:1 / 20:1	20:1 / 20:1
Approach Minimums	n/a	not lower than 1 mile
threshold/runway end lights / PAP-2 and threshold/runway end lights	PAP-1-2 and threshold/runway end lights	PAP-1-2 and threshold/runway end lights
Instrument Approach Aids	n/a / n/a	GPS / GPS
Runway Lighting	MIRL	MIRL
Runway Marking	BSC	BSC
Airport Reference Code (ARC)	A-1	A-1/B-1
Critical Aircraft	Piper Seneca	small aircraft excl.
Stage Length	500 miles	500 miles
Runway Object Free Area (ROFA)		
Length Beyond Runway	240'	240'
Width	250'	250'
Runway Safety Area (RSA)	240'	240'
Length Beyond Runway	120'	120'
Width	250'	250'
Obstacle Free Zone (OFZ)		
FAR Part 77 Category	Visual / Visual	Visual / Visual
Runway End Coordinates (NAD 83)		
Latitude	18° 28' 55" 39° 55' N	18° 28' 55" 43° 51' N
Longitude	18° 81' 39' 05.74" W	18° 81' 39' 05.48" W
Latitude	36° 28' 55" 14° 84" N	36° 28' 55" 14° 84" N
Longitude	36° 81' 39' 07.31" W	36° 81' 39' 07.31" W
Runway End Elevations (MSL)	106.5' / 100.9'	103.2' / 100.9'
Displaced Threshold Elevation (MSL)	- / 100.8'	- / 100.8'
TDZ Elevation (MSL)	106.5' / 106.6'	106.6' / 106.6'
Line of Sight Violations	n/a	n/a

**C&S COMPANIES**  
605 E. Robinson Street, Suite 210, Orlando, FL 32810  
Phone: 407-422-1118, Fax: 407-541-0149, www.cscos.com

**CITY OF UMATILLA**  
Best of All Lake County, FL

PROJECT NO:	DATE:	SCALE:	CADD FILE NO.:	PROJECT MGR.:	DESIGNED BY:	DRAWN BY:	CHECKED BY:	DATE:	DESCRIPTION:
10001.001	OCTOBER 2010	AS SHOWN	UMATILLA.ALP.DGN	KCK	JCT	JCT	KCK		

NO ALTERATION ON THESE DRAWINGS IS ALLOWED UNLESS SAID ALTERATIONS ARE MADE UNDER THE DIRECTION OF A LICENSED PROFESSIONAL ENGINEER. ENGINEERS SHALL AFFIX TO THE ITEM HIS SEAL AND THE NOTATION ALTERED BY FOLLOWED BY HIS SIGNATURE AND THE SPECIFIC DESCRIPTION OF SUCH ALTERATION.

UMATILLA MUNICIPAL AIRPORT  
CITY OF UMATILLA  
LAKE COUNTY, FLORIDA

**AIRPORT LAYOUT PLAN UPDATE**  
**AIRPORT LAYOUT PLAN**

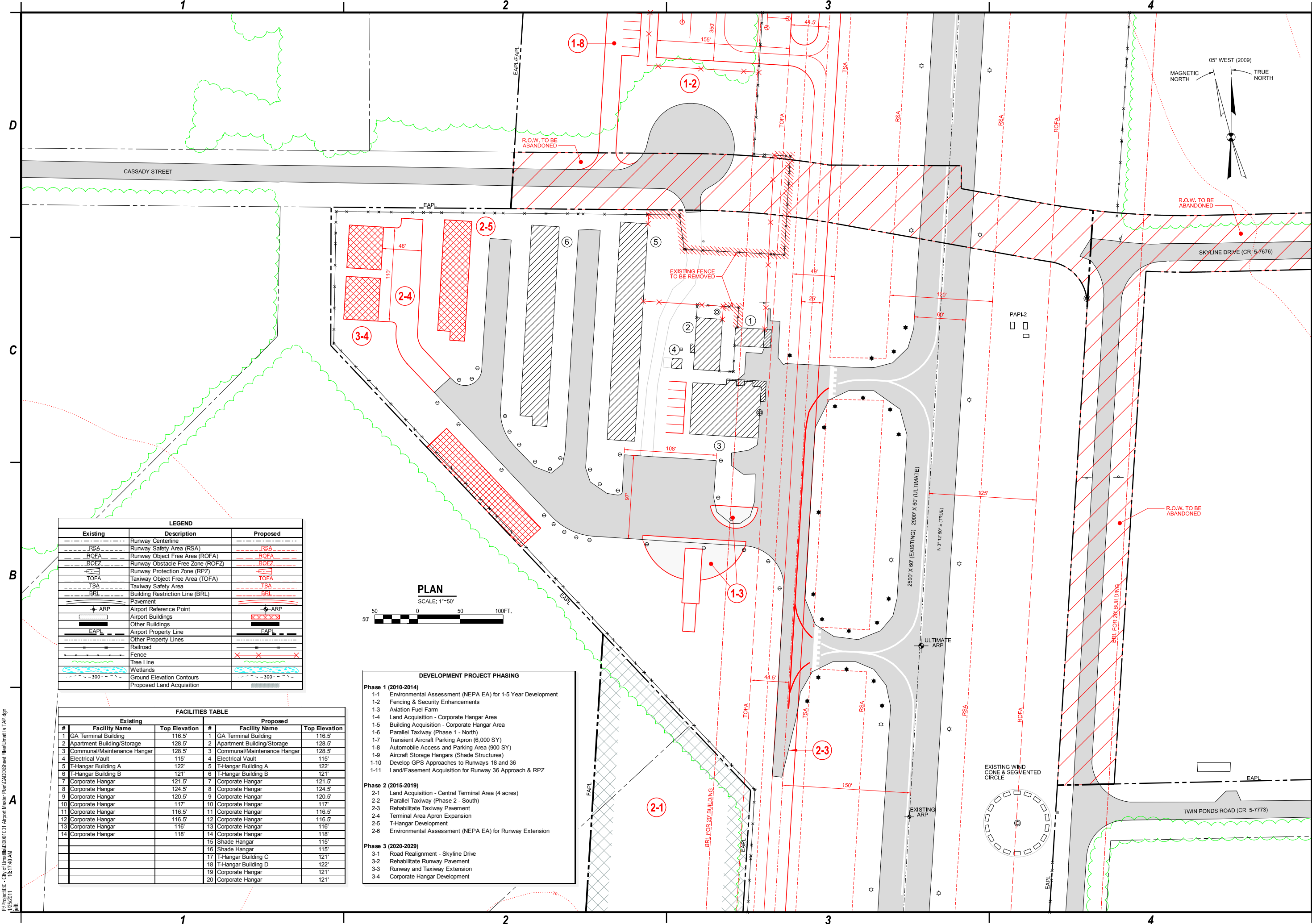
SHEET REFERENCE NO. **3**  
SHEET 3 OF 8  
Copyright ©

PROJECT NO.	DATE	SCALE	CADD FILE NO.	PROJECT MGR.	DESIGNED BY	DRAWN BY	CHECKED BY	MARK	DATE	DESCRIPTION
100.001.001	OCTOBER 2010	AS SHOWN	UMATILLA TAP.DGN	KCK	JCT	JCT	KCK			

NO ALTERATION ON THESE DRAWINGS IS ALLOWED UNLESS SAID ALTERATIONS ARE MADE UNDER THE DIRECTION OF A LICENSED PROFESSIONAL ENGINEER. ENGINEER SHALL AFFIX TO THESE DRAWINGS HIS SEAL AND THE NOTATION "ALTERED BY" FOLLOWED BY HIS SIGNATURE AND THE SPECIFIC DESCRIPTION OF SUCH ALTERATION.

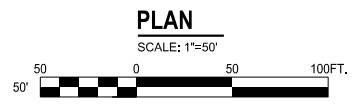
UMATILLA MUNICIPAL AIRPORT  
 CITY OF UMATILLA  
 LAKE COUNTY, FLORIDA

**AIRPORT LAYOUT PLAN UPDATE**  
**TERMINAL AREA**  
**PLAN**



**LEGEND**

Existing	Description	Proposed
---	Runway Centerline	---
---	Runway Safety Area (RSA)	---
---	Runway Object Free Area (ROFA)	---
---	Runway Obstacle Free Zone (ROFZ)	---
---	Runway Protection Zone (RPZ)	---
---	Taxiway Object Free Area (TOFA)	---
---	Taxiway Safety Area (TSA)	---
---	Building Restriction Line (BRL)	---
---	Pavement	---
+	Airport Reference Point	+
---	Airport Buildings	---
---	Other Buildings	---
---	Airport Property Line	---
---	Other Property Lines	---
---	Railroad	---
---	Fence	---
---	Tree Line	---
---	Wetlands	---
---	Ground Elevation Contours	---
---	Proposed Land Acquisition	---

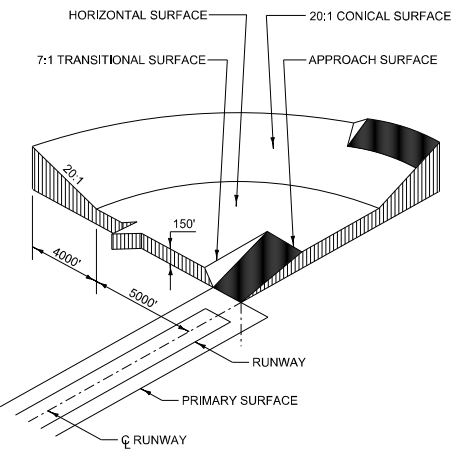
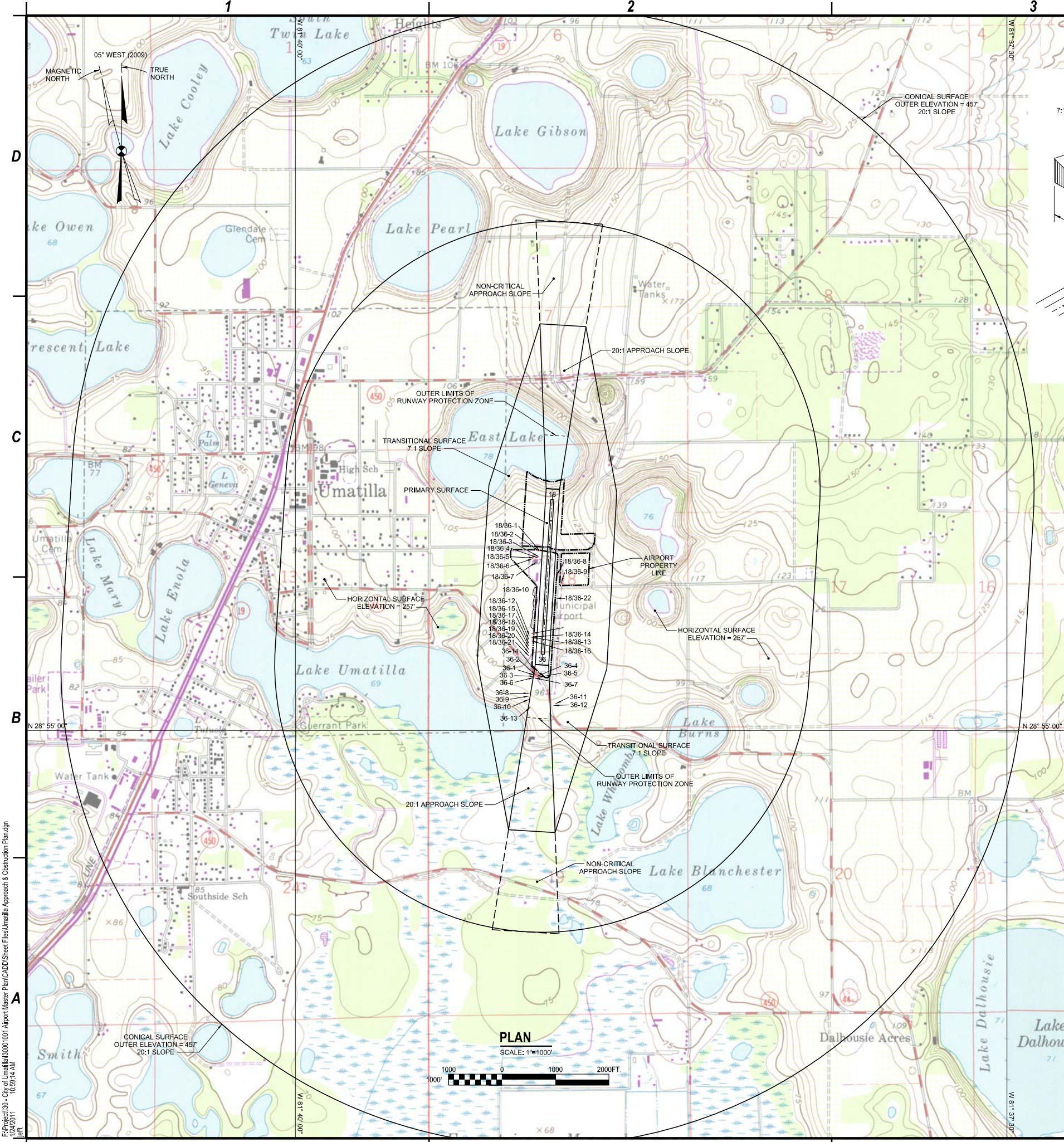


**FACILITIES TABLE**

Existing		Proposed	
#	Facility Name	#	Facility Name
1	GA Terminal Building	1	GA Terminal Building
2	Apartment Building/Storage	2	Apartment Building/Storage
3	Communal/Maintenance Hangar	3	Communal/Maintenance Hangar
4	Electrical Vault	4	Electrical Vault
5	T-Hangar Building A	5	T-Hangar Building A
6	T-Hangar Building B	6	T-Hangar Building B
7	Corporate Hangar	7	Corporate Hangar
8	Corporate Hangar	8	Corporate Hangar
9	Corporate Hangar	9	Corporate Hangar
10	Corporate Hangar	10	Corporate Hangar
11	Corporate Hangar	11	Corporate Hangar
12	Corporate Hangar	12	Corporate Hangar
13	Corporate Hangar	13	Corporate Hangar
14	Corporate Hangar	14	Corporate Hangar
15	Shade Hangar	15	Shade Hangar
16	Shade Hangar	16	Shade Hangar
17	T-Hangar Building C	17	T-Hangar Building C
18	T-Hangar Building D	18	T-Hangar Building D
19	Corporate Hangar	19	Corporate Hangar
20	Corporate Hangar	20	Corporate Hangar

- DEVELOPMENT PROJECT PHASING**
- Phase 1 (2010-2014)**
- 1-1 Environmental Assessment (NEPA EA) for 1-5 Year Development
  - 1-2 Fencing & Security Enhancements
  - 1-3 Aviation Fuel Farm
  - 1-4 Land Acquisition - Corporate Hangar Area
  - 1-5 Building Acquisition - Corporate Hangar Area
  - 1-6 Parallel Taxiway (Phase 1 - North)
  - 1-7 Transient Aircraft Parking Apron (6,000 SY)
  - 1-8 Automobile Access and Parking Area (900 SY)
  - 1-9 Aircraft Storage Hangars (Shade Structures)
  - 1-10 Develop GPS Approaches to Runways 18 and 36
  - 1-11 Land/Easement Acquisition for Runway 36 Approach & RPZ
- Phase 2 (2015-2019)**
- 2-1 Land Acquisition - Central Terminal Area (4 acres)
  - 2-2 Parallel Taxiway (Phase 2 - South)
  - 2-3 Rehabilitate Taxiway Pavement
  - 2-4 Terminal Area Apron Expansion
  - 2-5 T-Hangar Development
  - 2-6 Environmental Assessment (NEPA EA) for Runway Extension
- Phase 3 (2020-2029)**
- 3-1 Road Realignment - Skyline Drive
  - 3-2 Rehabilitate Runway Pavement
  - 3-3 Runway and Taxiway Extension
  - 3-4 Corporate Hangar Development

F:\Project\10 - City of Umatilla\10001001 Airport Master Plan\CADD\Sheet Files\Umatilla TAP.dgn  
 10/2/2011 10:17:40 AM



**FAR PART 77 SURFACES**

**GENERAL NOTES**

- ALL ELEVATIONS SHOWN IN FEET ABOVE MEAN SEA LEVEL.
- ESTABLISHED AIRPORT ELEVATION IS 107 FEET.
- SEE SHEET 6 FOR DEPICTION OF ALL CLOSE-IN OBSTRUCTIONS.
- THERE ARE NO KNOWN OBSTRUCTIONS IN HORIZONTAL AND CONICAL SURFACES.
- MAPPING FOR THE OBSTRUCTION EVALUATION WAS PREPARED FROM A COMBINATION OF DATA COMPILED FOR THE 1999 AIRPORT OBSTRUCTION STUDY, COMPLETED BY RS & H, INC., AND A REVIEW OF 2009 AERIAL PHOTOGRAPHY, GOOGLE EARTH PRO.
- REFER TO OBSTRUCTION DATA TABLE ON THIS SHEET FOR DESCRIPTION, SURFACE ELEVATION, PENETRATION, AND PROPOSED ACTION FOR EACH OBSTRUCTION.
- REFER TO THE INNER PORTION OF THE APPROACH SURFACE PLAN VIEW DETAILS FOR CLOSE-IN OBSTRUCTIONS.
- GUIDANCE ON AIRPORT ZONES AND AIRSPACE HEIGHT LIMITATIONS IS PROVIDED IN THE CITY OF UMATILLA ZONING REGULATIONS, CHAPTER 5, SECTION 6.

OBSTRUCTION DATA TABLE					
Part 77 Surfaces: Runway 18 Approach (A) and Transitional (T)					
Part 77 Approach Slope: 20:1; Transitional Slope: 7:1					
Obstruction Number	Description	Top Elevation	Penetration	Part 77 Surface	Proposed Action
None					
Part 77 Surfaces: Runway 36 Approach (A) and Transitional (T)					
Part 77 Approach Slope: 20:1; Transitional Slope: 7:1					
Obstruction Number	Description	Top Elevation	Penetration	Part 77 Surface	Proposed Action
36-1	tree	107.45	-3.55	A	No action
36-2	tree	108.16	-2.84	A	No action
36-3	tree	105.79	-6.21	A	No action
36-4	tree	103.4	-9.6	A	No action
36-5	tree	109.5	-3.5	A	No action
36-6	tree	105.27	-8.73	A	No action
36-7	tree	113.4	-0.6	A	No action
36-8	tree	158.51	23.51	T	Trim
36-9	tree	154.37	19.37	T	Trim
36-10	tree	142.43	4.43	T	Trim
36-11	tree	152.34	1.34	T	Trim
36-12	tree	158.88	11.88	T	Trim
36-13	tree	143.77	2.77	A	Trim
36-14	Rose St. L	112	5	A	Light
	Rose St. C	111	-3	A	No action
	Rose St. R	108	-27	A	No action
Part 77 Surfaces: Runway 18-36 Primary (P) and Transitional (T)					
Part 77 Slope: 7:1					
Obstruction Number	Description	Top Elevation	Penetration	Part 77 Surface	Proposed Action
18/36-1	post	114.00	2	T	No action
18/36-2	post	114.00	2	T	No action
18/36-3	pole	118.00	5	T	Light
18/36-4	building	116.50	0.1	T	Light
18/36-5	building	128.50	2.8	T	Light
18/36-6	pole	126.75	8.75	T	Light
18/36-7	building	128.50	12.1	T	Light
18/36-8	post	118.72	7.72	T	Remove
18/36-9	pole	134.90	9.9	T	Light
18/36-10	group of trees	109' - 116'	1' - 7'	T	Trim
18/36-11	post	113.55	3.55	T	Light
18/36-12	building	121.50	5.2	T	Light
18/36-13	post	113.55	3.55	T	Relocate
18/36-14	post	113.55	3.55	T	Relocate
18/36-15	building	124.50	9.9	T	Light
18/36-16	post	116.87	7.87	T	Relocate
18/36-17	building	120.50	6.4	T	Light
18/36-18	building	117.00	3.4	T	Light
18/36-19	building	116.50	2.9	T	Light
18/36-20	building	116.50	2.9	T	Light
18/36-21	building	116.00	2.4	T	Light
18/36-22	Skyline Drive	120.00	6.4	T	No action
Part 77 Surface: Horizontal					
Elevation: 257' MSL					
Number	Description	Top Elevation	Penetration	Part 77 Surface	Proposed Action
None					
Part 77 Surface: Conical					
Part 77 Slope: 20:1					
Number	Description	Top Elevation	Penetration	Part 77 Surface	Proposed Action
None					



PROJECT NO.:	DESIGNED BY:	DRAWN BY:	CHECKED BY:	DATE	DESCRIPTION	MARK
18001.001	JCT	JCT	KCK			

NO ALTERATION PERMITTED HEREON EXCEPT AS PROVIDED UNDER SECTION 7209 SUBDIVISION 2 OF THE NEW YORK STATE EDUCATION LAW

UMATILLA MUNICIPAL AIRPORT  
 CITY OF UMATILLA  
 LAKE COUNTY, FLORIDA

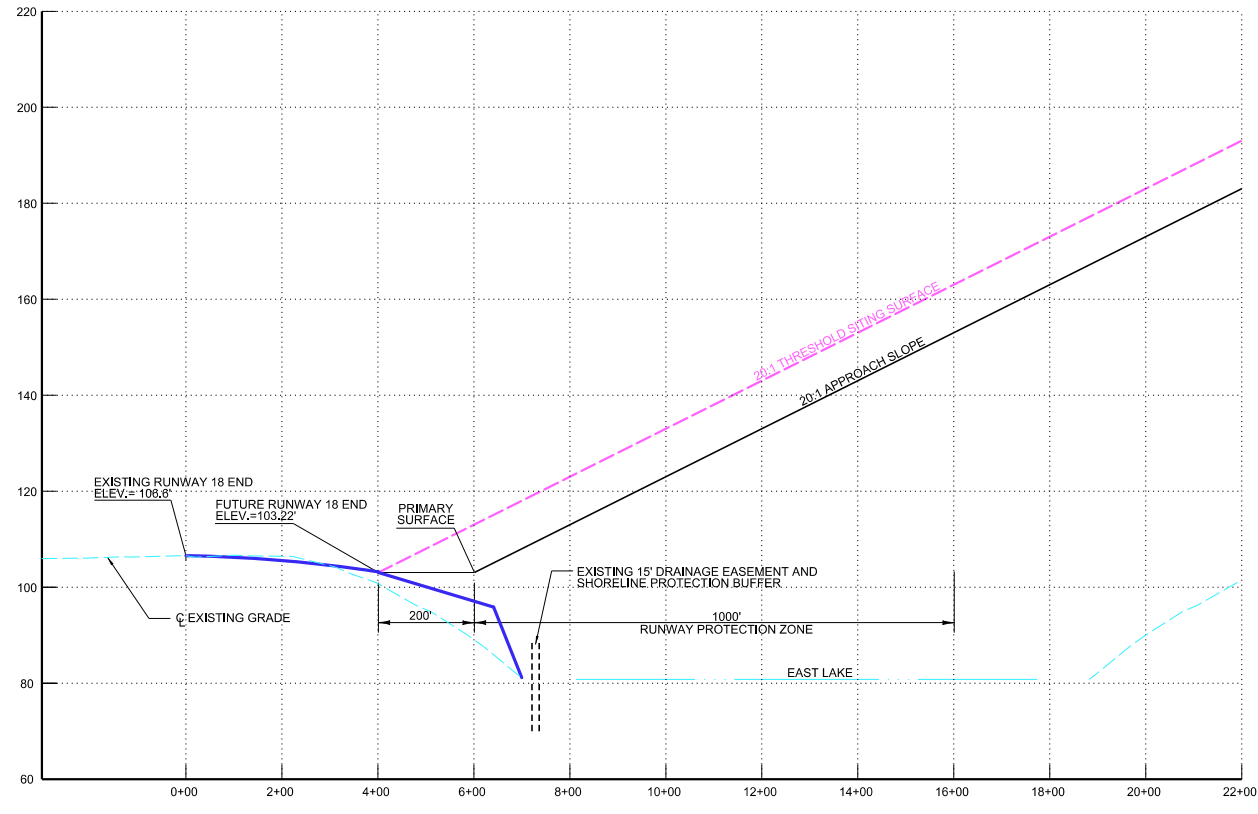
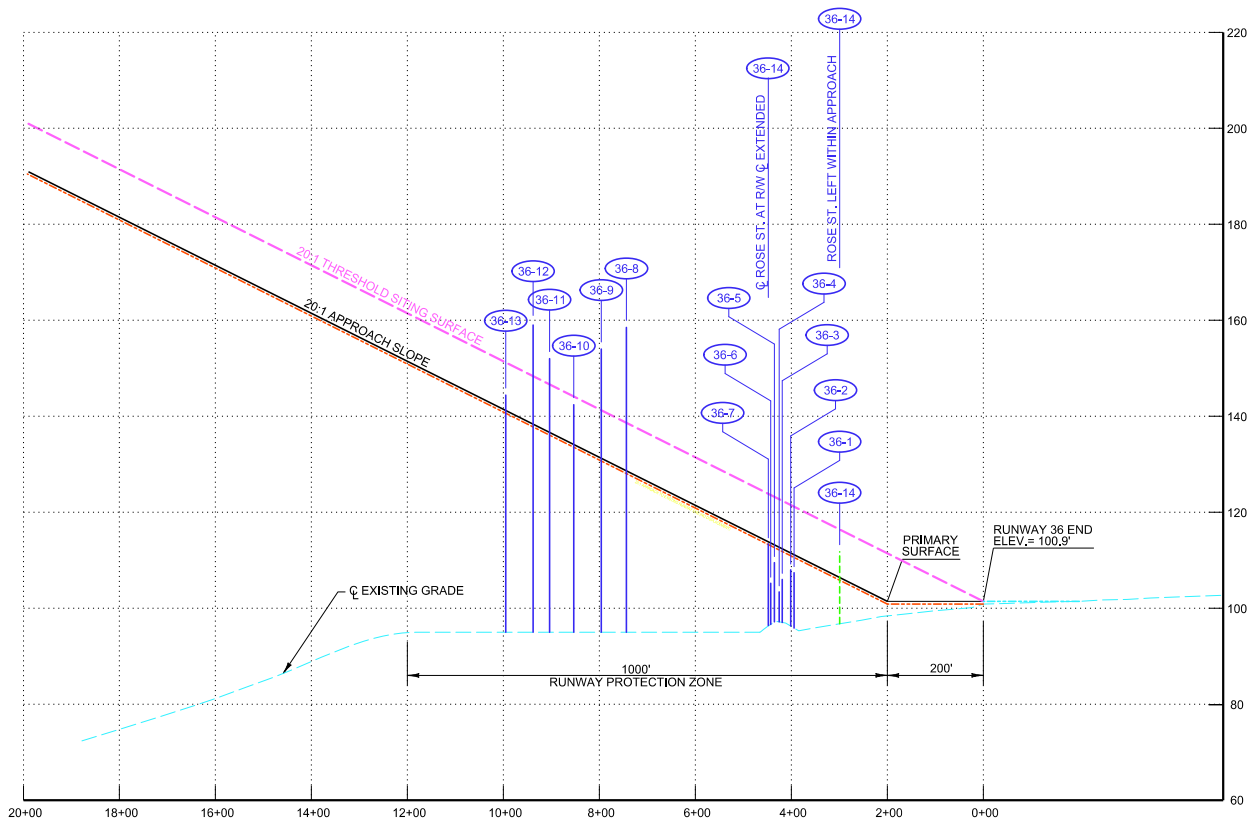
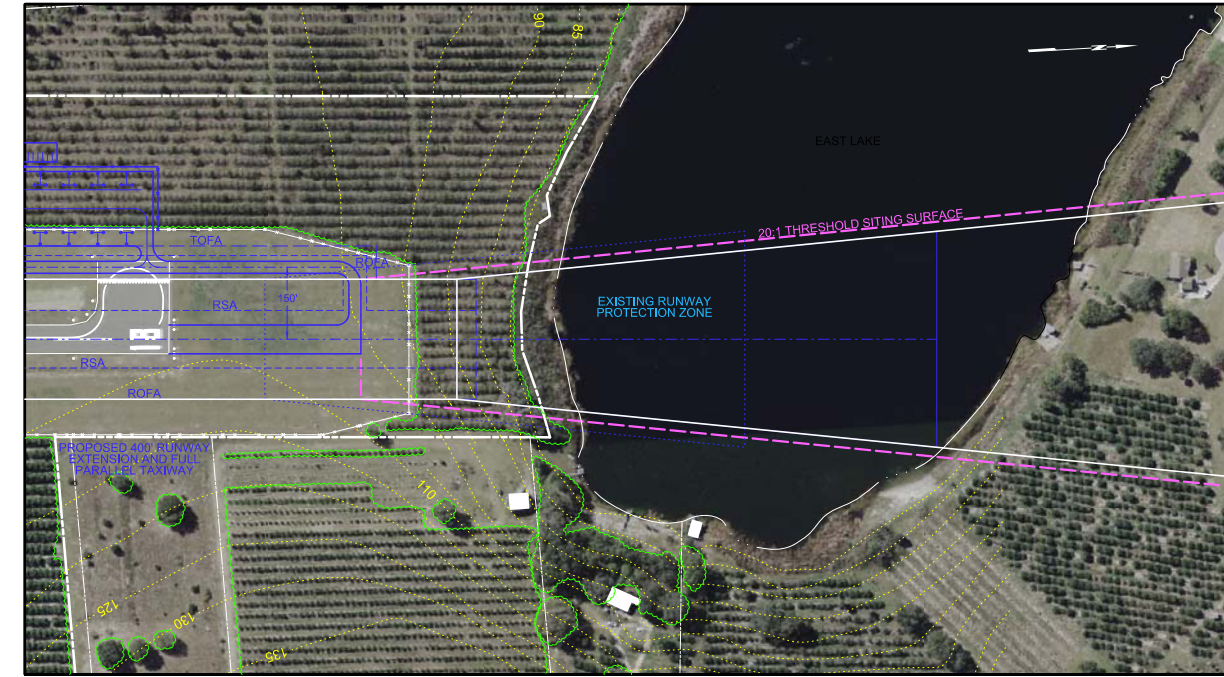
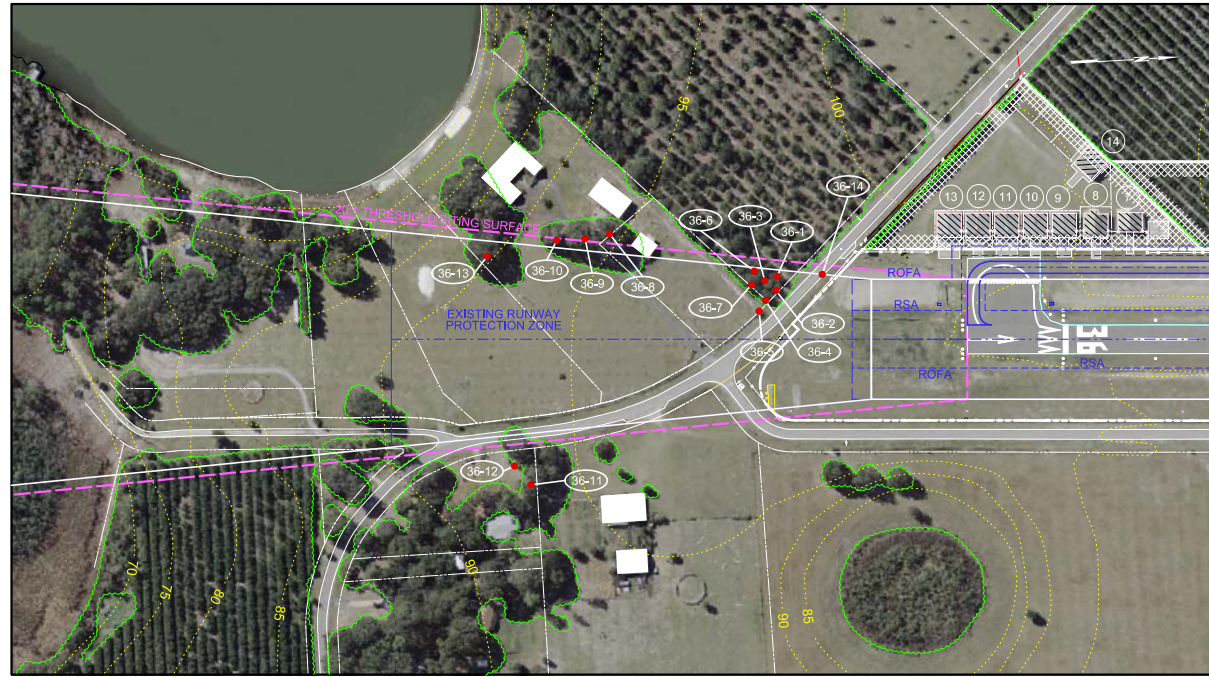
**AIRPORT LAYOUT PLAN UPDATE  
 AIRSPACE PLAN AND  
 OBSTRUCTION DATA**

D

C

B

A



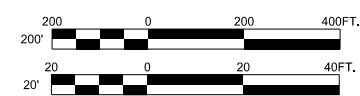
**RUNWAY 36 INNER APPROACH  
PLAN AND PROFILE**  
SCALE: 1"=200' HORIZONTAL  
1"=20' VERTICAL

**RUNWAY 18 INNER APPROACH  
PLAN AND PROFILE**  
SCALE: 1"=200' HORIZONTAL  
1"=20' VERTICAL

**LEGEND**

- APPROACH SURFACE
- THRESHOLD SITING SURFACE
- TREE OBSTRUCTION
- TERRAIN OBSTRUCTION
- POLE OBSTRUCTION
- BUILDING OBSTRUCTION

NOTE:  
REFER TO OBSTRUCTION DATA TABLE  
ON SHEET 5 OF 8 FOR DESCRIPTION,  
ELEVATION, PENETRATION, AND PROPOSED  
ACTION FOR EACH OBSTRUCTION.



F:\Project\130 - City of Umatilla\130001001 Airport Master Plan\CADD\Sheet Files\Umatilla Inner App Profiles.dgn  
10/20/2010 2:39:42 PM



**C&S Engineers, Inc.**  
605 E. Robinson Street  
Suite 210  
Orlando, FL 32801  
Phone: 407-422-1118  
Fax: 407-841-9149  
www.cscos.com



PROJECT NO.	DATE	SCALE	CADD FILE NO.	PROJECT MGR.	DESIGNED BY	DRAWN BY	CHECKED BY	DATE
130.001.001	OCTOBER 2010	AS SHOWN	UMATILLA.AL.P.DGN	KCK	JCT	JCT	KCK	

UMATILLA MUNICIPAL AIRPORT  
CITY OF UMATILLA  
LAKE COUNTY, FLORIDA

**AIRPORT LAYOUT PLAN UPDATE  
RUNWAY 18-36 INNER  
APPROACH PLAN  
AND PROFILE**

SHEET REFERENCE NO.  
**6**  
SHEET 6 OF 8

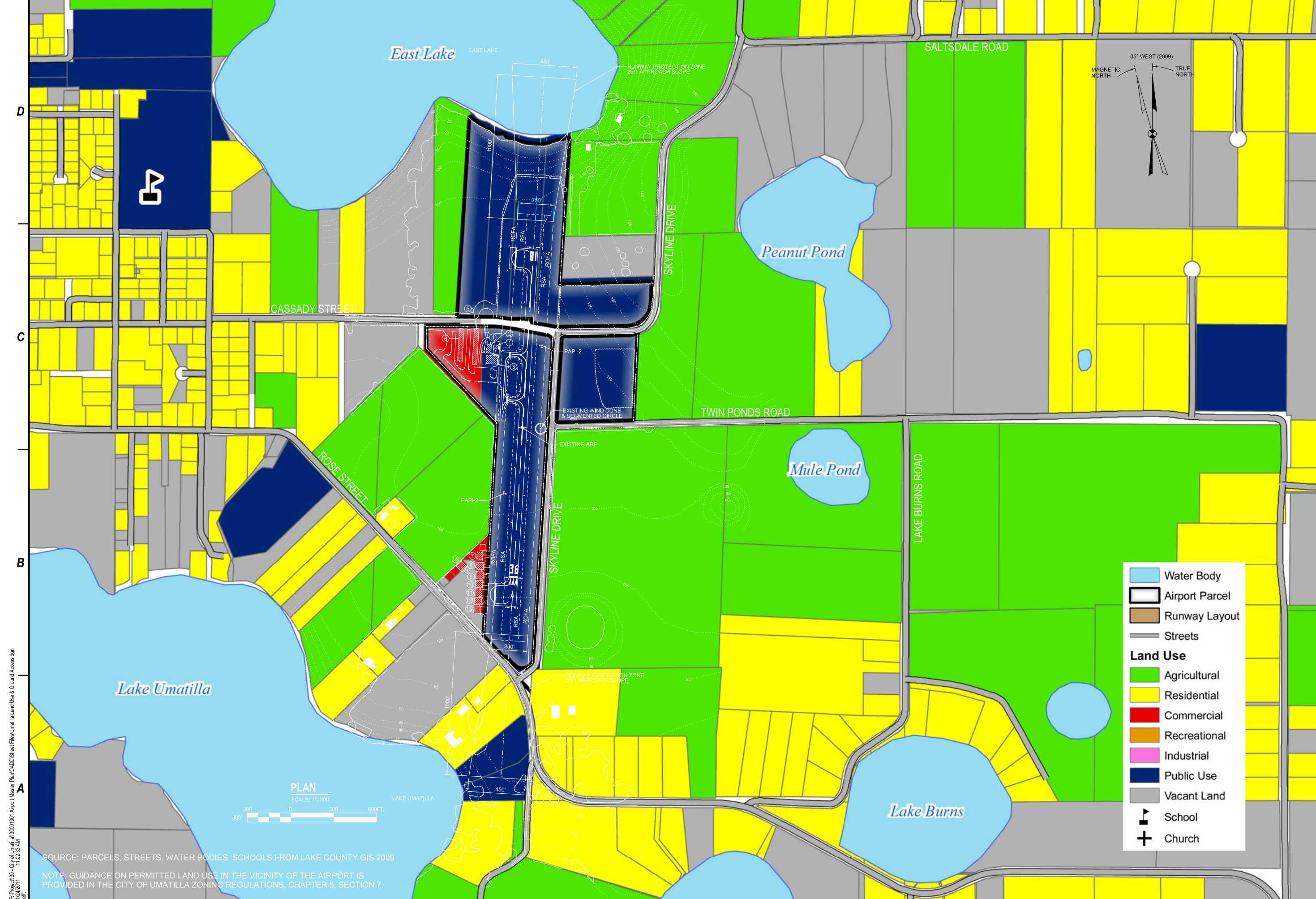
MARK	DESCRIPTION	DATE
▲		
▲		
▲		
▲		
▲		
▲		
▲		
▲		
▲		

PROJECT NO:	190.001.001	PROJECT MGR:	KCK
DATE:	OCTOBER 2010	DESIGNED BY:	JCT
SCALE:	AS SHOWN	DRAWN BY:	JCT
CADD FILE NO:	UMA LAND USE.DGN	CHECKED BY:	KCK

NO ALTERATION PERMITTED HEREON EXCEPT AS PROVIDED UNDER SECTION 7209 SUBDIVISION 2 OF THE NEW YORK STATE EDUCATION LAW

UMATILLA MUNICIPAL AIRPORT  
 CITY OF UMATILLA  
 LAKE COUNTY, FLORIDA

**AIRPORT LAYOUT PLAN UPDATE  
 LAND USE AND  
 GROUND ACCESS  
 PLAN**

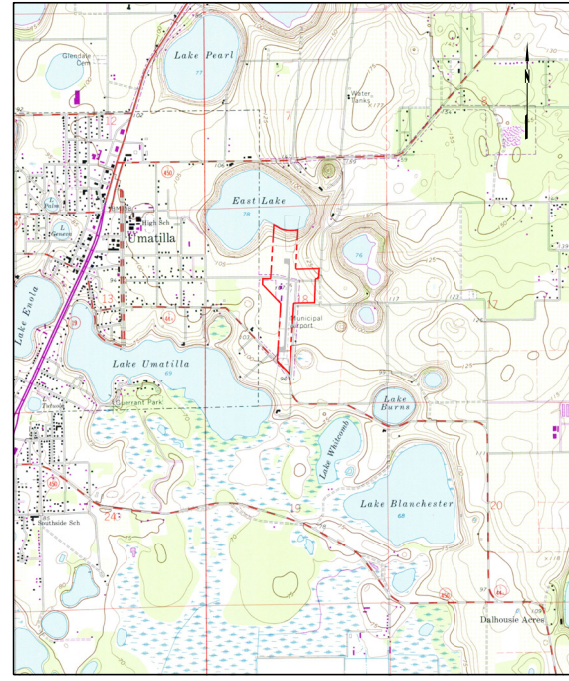


	Water Body
	Airport Parcel
	Runway Layout
	Streets
<b>Land Use</b>	
	Agricultural
	Residential
	Commercial
	Recreational
	Industrial
	Public Use
	Vacant Land
	School
	Church

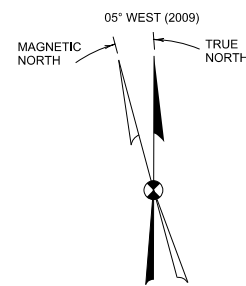
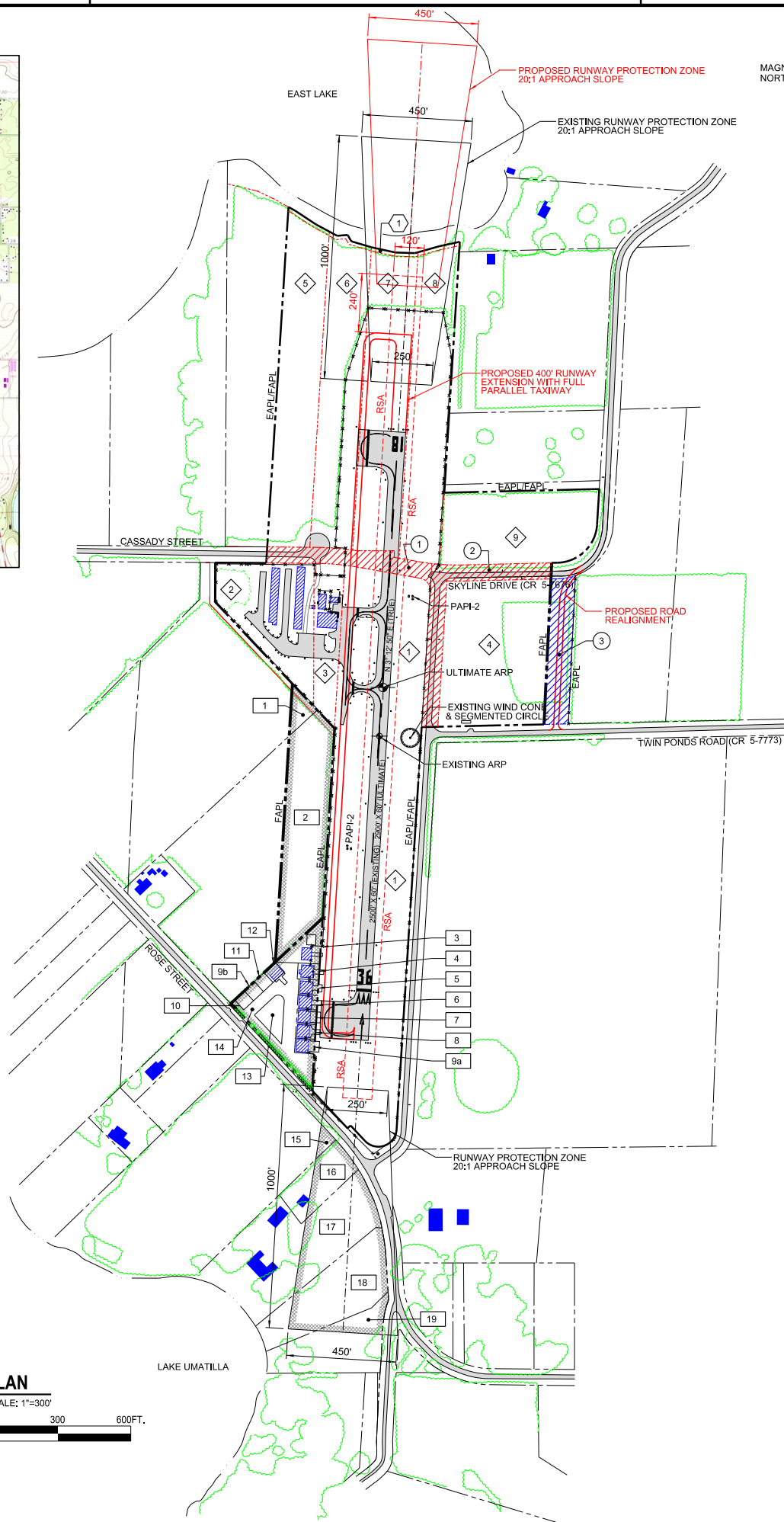
**PLAN**  
 SCALE: 1"=300'

F:\Project\30 - City of Umatilla\30001\001 Airport Master Plan\CADD\Sheet Files\Umatilla Land Use & Ground Access.dgn  
 11/22/2011 11:22:33 AM  
 MARK

SOURCE: PARCELS, STREETS, WATER BODIES, SCHOOLS FROM LAKE COUNTY GIS 2009  
 NOTE: GUIDANCE ON PERMITTED LAND USE IN THE VICINITY OF THE AIRPORT IS PROVIDED IN THE CITY OF UMATILLA ZONING REGULATIONS, CHAPTER 5, SECTION 7.



LOCATION MAP  
NOT TO SCALE



EXISTING PROPERTY & EASEMENT TABLE					
Reference Number	Parcel Number	Acreage	Date of Acquisition	Grant Number or Purchase Information	Type of Ownership
1	1501521	19	4/14/1999		Fee Simple
2	1040302	3.23	5/15/2000		Fee Simple
3	1278104	1.8	5/15/2000		Fee Simple
4	1083834	7.41	5/15/2000		Fee Simple
5	3794427	5.4	12/17/2001		Fee Simple
6	3794428	5.1	12/17/2001		Fee Simple
7	3794429	5.4	12/17/2001		Fee Simple
8	3794430	5	12/17/2001		Fee Simple
9	3794431	4.2	12/17/2001		Fee Simple

- NOTES:**
1. GEOGRAPHIC COORDINATES REFERRED TO NORTH AMERICAN DATUM OF 1983:
 

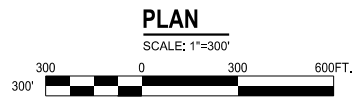
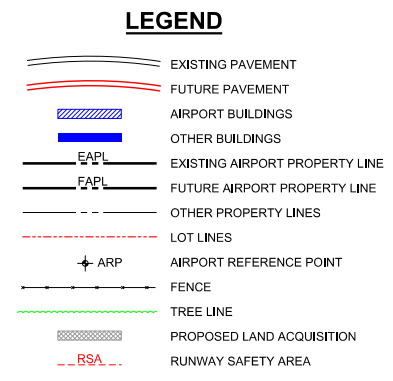
	LATITUDE	LONGITUDE
ARP (EXISTING)	28° 55' 27" N	81° 39' 07" W
ARP (ULTIMATE)	28° 55' 29" N	81° 39' 06" W
RW 18 END (EXISTING)	28° 55' 39.55" N	81° 39' 05.74" W
RW 18 END (ULTIMATE)	28° 55' 43.51" N	81° 39' 05.48" W
RW 36 END (EXISTING & ULTIMATE)	28° 55' 14.84" N	81° 39' 07.31" W
  2. HORIZONTAL DATUM: FLORIDA STATE PLANE COORDINATE SYSTEM, EASTERN ZONE
  3. AREA = 96 ACRES (TITLE IN FEE)
  4. THIS MAP WAS COMPILED FROM CERTAIN DOCUMENTS, DEEDS, PLANS OF RECORD AND UNDOCUMENTED SOURCES. IS NOT INTENDED TO INDICATE AN ACTUAL BOUNDARY SURVEY AND IS SUBJECT TO ANY STATEMENT OF FACTS AN ACCURATE AND UP-TO-DATE ABSTRACT OF TITLE MAY SHOW.
  5. INFORMATION FROM A METES AND BOUNDS SURVEY OF THE ENTIRE AIRPORT PROPERTY DONE BY C&S ENGINEERS, INC., IN JUNE 2009 WAS USED TO PREPARE THIS PROPERTY MAP.

PROPOSED ACQUISITION TABLE				
Reference Number	Acreage	Owner	Tax Parcel Number	Purpose
1	0.26	E. Ellis	1040299	Taxiway/Airfield Dev.
2	3.77	W. Condermann	1823145	Taxiway/Airfield Dev.
3	0.48	P. Huebner	3352912	Taxiway/Airfield Dev.
4	0.13	M. Houghton	3694970	Taxiway/Airfield Dev.
5	0.1	D. Boldman	3454880	Taxiway/Airfield Dev.
6	0.1	P. Bryan	3786245	Taxiway/Airfield Dev.
7	0.1	R. Martin	3779577	Taxiway/Airfield Dev.
8	0.1	E. Campbell	3874490	Taxiway/Airfield Dev.
9 a/b	0.17	R. Bryan	3241487	Taxiway/Airfield Dev.
10	0.07	R. Granger	3693914	Taxiway/Airfield Dev.
11	0.07	P. Bryan	3864813	Taxiway/Airfield Dev.
12	0.07	R. Bryan	1800251	Taxiway/Airfield Dev.
13	1.16	J.R. & T.L. Bryan	3815760	Taxiway/Airfield Dev.
14	0.33	1/2 shared interest	N/A	Taxiway/Airfield Dev.
15	0.12*	D. Stephens	1040337	Runway Protection Zone
16	0.72*	P. Bryan	3793313	Runway Protection Zone
17	1.91*	P. Bryan	1692679	Runway Protection Zone
18	2.22*	Lake County BCC	3793277	Runway Protection Zone
19	0.45*	Lake County BCC	3793276	Runway Protection Zone

\* PROPOSED AVIGATION EASEMENT

PROPOSED ABANDONMENT/LAND SWAP TABLE		
Reference Number	Description	Proposed Action
1	Cassady St. R.O.W.	County abandonment to City
2	Skyline Drive R.O.W.	County abandonment to City
3	Skyline Drive R.O.W.	City conveyance to County (land swap)

ENCUMBRANCE TABLE	
Reference Number	Description
1	15' drainage easement and shoreline protection buffer



F:\Project\130 - City of Umatilla\130001001 Airport Master Plan\CADD\Sheet Files\Umatilla Property Map.dgn  
 9/4/11 9:44:34 AM  
 JEFF

**C&S COMPANIES**  
 C&S Engineers, Inc.  
 605 E. Robinson Street  
 Suite 210  
 Orlando, FL 32801  
 Phone: 407-422-1118  
 Fax: 407-641-9149  
 www.cscos.com



PROJECT MGR:	DESIGNED BY:	DRAWN BY:	CHECKED BY:	DATE
KCK	JCT	JCT	KCK	

PROJECT NO: 130.001.001  
 DATE: OCTOBER 2010  
 SCALE: AS SHOWN  
 CADD FILE NO: UMATILLA PROP MAP

NO ALTERATION PERMITTED HEREON EXCEPT AS PROVIDED UNDER SECTION 7209 SUBDIVISION 2 OF THE NEW YORK STATE EDUCATION LAW

UMATILLA MUNICIPAL AIRPORT  
 CITY OF UMATILLA  
 LAKE COUNTY, FLORIDA

AIRPORT LAYOUT PLAN UPDATE  
**AIRPORT PROPERTY MAP**